

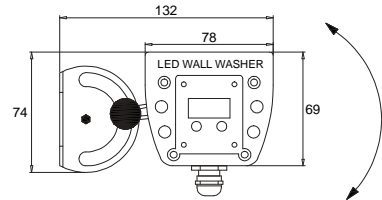
## INSTRUCTION OF LED WALL WASHER/ LWW-5

This product is mainly used for decorating and highlighting in building frame, garden, etc. It can work in independent mode and DMX mode, which can generate various color changing effects, such as flashing, fading, steady ,seven color jumping synchronously etc. 256 class gray degree dimmer, DMX programable (thousands of effects available if many lights being connected together).

### A. Structure and Specification:

Material of Shell: Aluminum alloy

Rotary angle: 150°



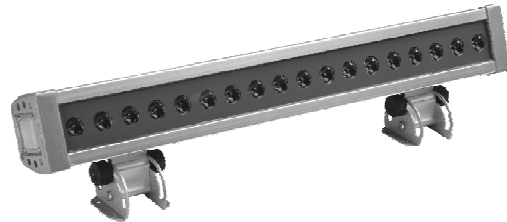
### B. Technical Parameters

Input Voltage: 100V~256V AC

Operating Voltage: 24V DC

Protection Rating: IP 65

Operating Temperature: -20°C~40°C



Model No .	LED Quantity	Color	Power Consumption	Beam Angel	Actual Length	Weight	
LWW-5-12P-L400	12 Power LED	R-4, G-4, B-4	28 Watts	15°/30°/45°	440mm	2.3kgs	
LWW-5-24P-L800	24 Power LED	R-8, G-8, B-8	56 Watts	15°/30°/45°	840mm	4.2kgs	
LWW-5-36P-L1200	36 Power LED	R-12, G-12, B-12	84 Watts	15°/30°/45°	1240mm	6.1kgs	
LWW-5-18P-L500	18 Power LED	R-6, G-6, B-6	28 Watts	15°/30°/45°	580mm	3.0kgs	
LWW-5-36P-L1000	36 Power LED	R-12, G-12, B-12	56 Watts	15°/30°/45°	1120mm	5.9kgs	

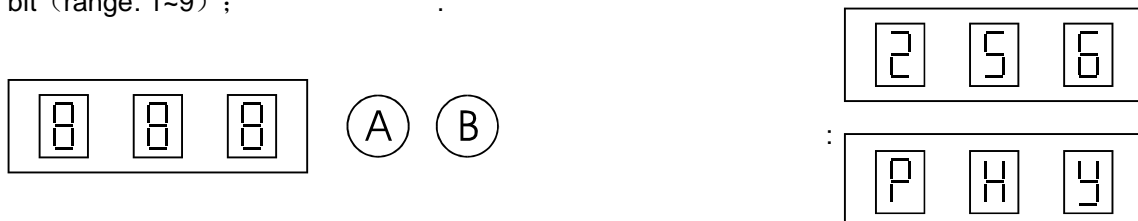
### C. Working Mode:

Independent mode; DMX mode; Master/Slave mode

### D. Function & Setup

#### D-1 Independent mode

After pressing **A** four times (the first three times is the setup on DMX address) or **B** directly light enter into independent mode; the digital LEDs shows **PXY**, press A once, active digital LEDs moves backward, you can choose function via **X** and parameter via **Y**; Press **B**, the corresponding flash digital LED increase one bit (range: 1~9) ;



X refer to functions (the value between 1 to A) , Y refer to value of speed and gray degree for the functions (the value between 1 to 9) .When pressing button, please wait for about 10 sec, then you can exit the mode of adjustment function, the digital LED stop flashing and data recorded.

Function and parameter sheet:

X value	Y value
1-static red	1~9 class gray degree
2-static green	1~9 class gray degree
3-static yellow	1~9 class gray degree
4-static blue	1~9 class gray degree
5-static purple	1~9 class gray degree
6-static cyan	1~9 class gray degree
7-static white	1~9 class gray degree
8-multicolor changing	1~9 class speed
9-multicolor fading	1~9 class speed
A-multicolor flashing	1~9 class speed

### D-2 DMX mode

#### 1. DMX Addressing

When the digital LED is not flashing, press **A**, digital LED begin to flash, press **A** once, active digital LEDs moves backward, you can start to edit the second digital LED; Press **B**, the corresponding flash digital LED increase one bit (the values between 1 to 9);

#### 2. DMX Channel instruction-3 Channels available as sheet:

CHANNEL 1		CHANNEL 2		CHANNEL 3	
Data	Function	Data	Function	Data	Function
0~255	Brightness of Red	0~255	Brightness of Green	0~255	Brightness of Blue

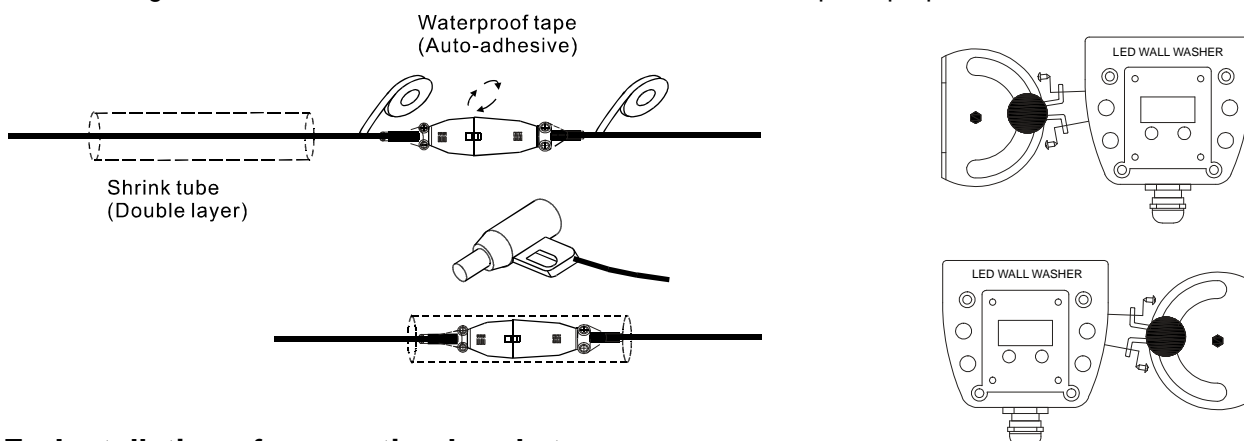
\*\*\*Enter or quit DMX mode automatically once detecting valid signal!!!

### D-3 Master/Slave mode

Choose any one light as the master for attaining auto online function, the operations are as below: firstly, set the address of master as 001, others are set as slave (address can be any one except 001); Change function of the master (001) light, then all lights will work synchronously;

### E. Waterproof treatment

The signal output connector XL-3R of the last fixture (maximum 30 fixtures) of each series must be wrapped with waterproof tape (auto-adhesive, please refer to instruction for operation), thence sealed with a 20 thermal shrinking sleeve and blow and shrink it with a hair drier for waterproof purpose.



### F. Installation of supporting brackets

Please screw the supporting to the built-in fixing patch inside of the aluminum housing according to your requirement and location.

### G. Caution:

- G-1. Do not plug them into power when the product is still in package ;
- G-2. Don't use anything to cover the fixture during application ;
- G-3. Don't use this product in close environment ;
- G-4. If this product appears to be damaged, do not attempt any repair, please contact your dealer.